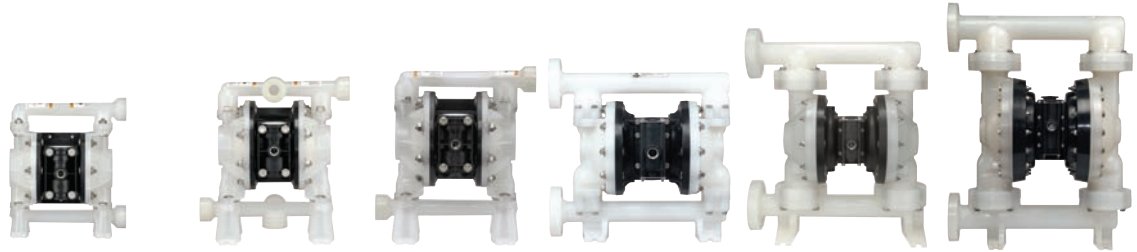


**Model Overview: Non-Metallic**

**EXPerT Series Pumps: Non-Metallic Models**

NON-METALLIC



<b>Models:</b>	<b>3/8"</b>	<b>1/2"</b>	<b>3/4"</b>	<b>1"</b>	<b>1-1/2"</b>	<b>2"</b>
<b>Maximum Flow GPM (LPM)</b>	10.6 (40.1)	14.4 (54.5)	14.8 (56)	53 (200)	123 (465)	184 (696)
<b>Max. Discharge Pressure PSI (BAR)</b>	100 (6.9)	100 (6.9)	100 (6.8)	120 (8.3)	120 (8.3)	120 (8.3)
<b>Fluid Ports Inlet/Outlet (BSP)</b>	3/8 - 18 N.P.T.F. - 1 Rp 3/8(3/8-19 BSP) Parallel (Side or Center)	1/2 - 18 N.P.T.F. - 1 Rp 1/2(1/2-14 BSP) Parallel (Side or Center)	3/4 - 14 N.P.T.F. - 1 Rp 3/4(3/4-14 BSP) Parallel	1" ANSI/DIN Flange (Side or Center) 1 - 11-1/2" NPT Rp 1(1-11 BSP) (Center Discharge)	1-1/2" ANSI/DIN Flange (Side or Center)	2" ANSI/DIN Flange (Side Discharge)
<b>Materials of Construction</b>	Acetal Polypropylene PVDF	Acetal Polypropylene PVDF	Polypropylene	Polypropylene PVDF	Polypropylene PVDF	Polypropylene PVDF
<b>Pump Weight lbs (Kg.)</b>	4.16 (1.89) Acetal Single Port 4.26 (1.93) Acetal Multi Port 4.50 (2.04) PVDF Single Port 4.62 (2.10) PVDF Multi Port 3.44 (1.56) Poly Single Port 3.55 (1.59) Poly Multi Port	6.28 (2.85) 6.67 (3.03) 6.78 (3.08) 7.24 (3.28) 5.21 (2.36) 5.44 (2.47)	5.61 (2.54)	19.35 (8.78) Poly Threaded 19.59 (8.89) Poly Center Port 19.87 (9.01) Poly Side Port 25.83 (11.72) PVDF Threaded 26.72 (12.12) PVDF Center Port 27.15 (12.32) PVDF Side Port	42.60 (19.32) Poly Side Port 63.94 (29.0) PVDF Side Port 42.30 (19.19) Poly Center Port 55.94 (25.37) PVDF Center Port	85.3 (38.7) Poly 110.9 (50.3) PVDF
<b>Max. Solids inches (mm)</b>	1/16" (1.6)	3/32" (2.4)	3/32" (2.4)	1/8" (3.2)	1/4" (6.4)	1/4" (6.4)
<b>Maximum Dry Suction Lift ft (m)</b>	8.5 (2.6) (PTFE fitted)	7.9 (2.4) (PTFE fitted)	4.27 (1.3) (PTFE fitted)	19 (5.7)	14 (4.2)	14 (4.2)
<b>Recommended Filter/Regulator Air Line Kit</b>	P29122-600 66073-1	P29122-600 66073-1	P29122-600 66073-1	P29221-610 66073-2	P29241-610 66084-1	P29351-600 66109